

GRID-TIED SOLAR INVERTERS

AEG

WIFI CONFIGURATION GUIDE



FOR INVERTER SERIES
AS-IR02 / AS-IR02-2 / AS-IC02-2

VERSION: GD202206 EN V1-22



Thank you for choosing an AEG solar inverter! You have two options for the WiFi configuration of your AEG inverter: 1) via Web Browser; or 2) via App.

OPTION 1: CONFIGURATION VIA WEB BROWSER

1. PREPARATION

Turn on the inverter; Power on your WiFi Router.

2. WIFI CONFIGURATION

STEP #1 - Connect your smart device to the WiFi „Solar-WiFi“ or „Solar-WiFi**“ (* refers to the last 8 digits of your AEG inverter Serial Number). Input 12345678 as password.

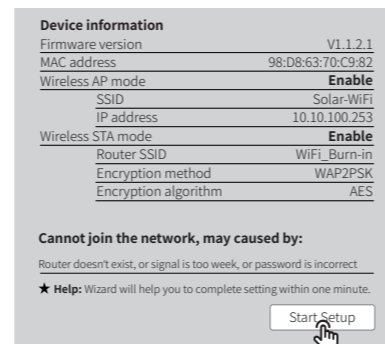
STEP #2 - Visit the website <http://10.10.100.253>



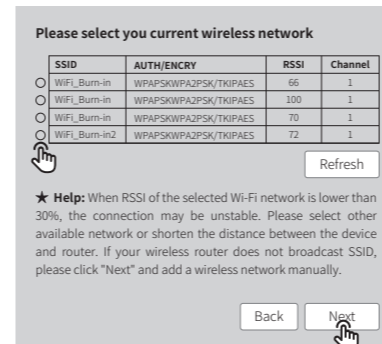
(should you see the message „Unauthorized login“ please refresh the page).

STEP#3 - Enter username (admin) and password (admin). Click on „Log in“.

STEP#4 - Click on „Start setup“

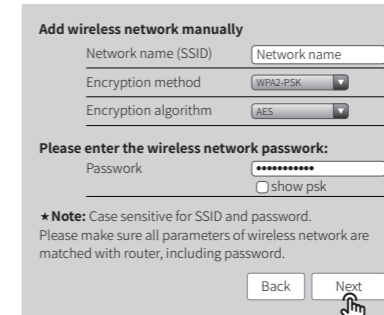


STEP #5 - Select the available WiFi and click „Next“

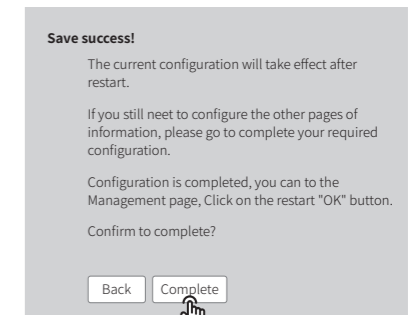


(Tip: WiFi module specifications are found under „Device Information“)

STEP#6 - Enter the WiFi network password and click „Next“

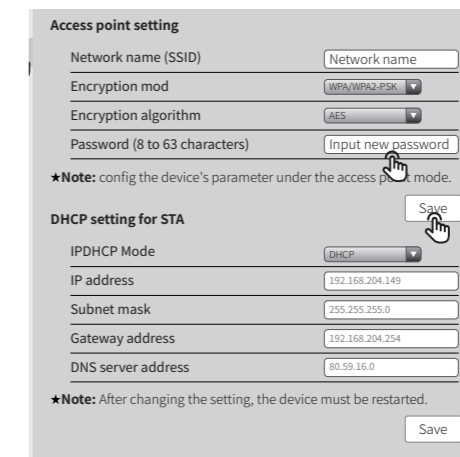


STEP #7 - Click „Complete“ to confirm



(Tip: please ensure there are no invalid / not accepted characters in the password. This may cause the installation to fail).

3. FURTHER INFORMATION



The network name (SSID) and password of the WiFi module can be changed in the Advanced Settings. We strongly recommend to change the password of your „Solar WiFi“ before or after the installation process. Solar Solutions cannot be held responsible for any leak of private information caused by the use of the „Solar WiFi“ default password.

OPTION 2: WIFI INSTALLATION VIA APP

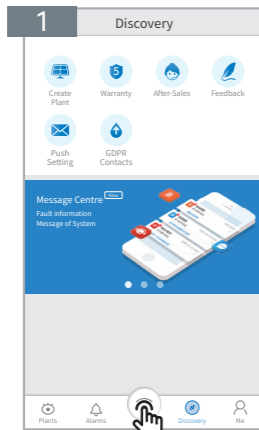
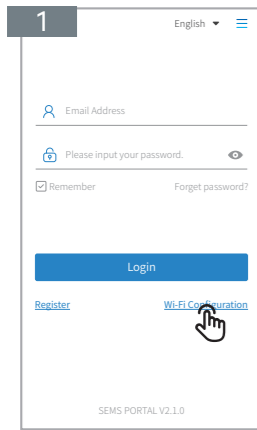
1. PREPARATION

Turn on the inverter; Power on your WiFi Router. Download the **SolarPortal** App from Google Play Store or Apple Store (choose according to your mobile device.)

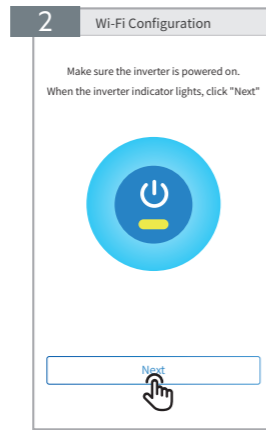


2. WIFI CONFIGURATION

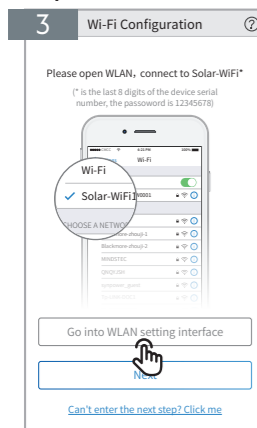
STEP #1 - Click on „WiFi Configuration“ in the Login page or click the WiFi icon on the Homepage



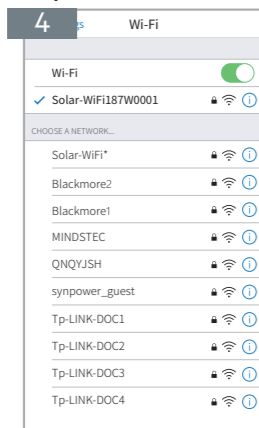
STEP #2 - Make sure the inverter is powered on; click „Next“



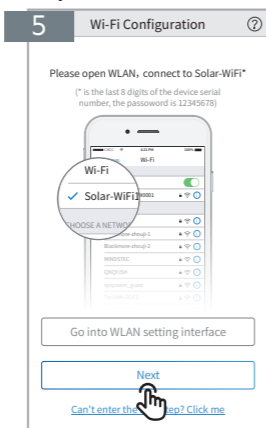
STEP #3 - Click on „Go into WLAN (WiFi) setting interface“



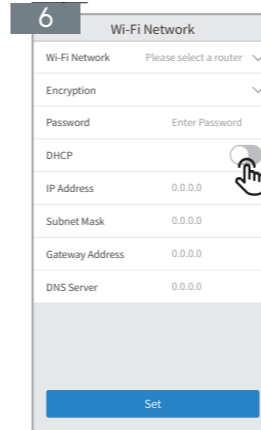
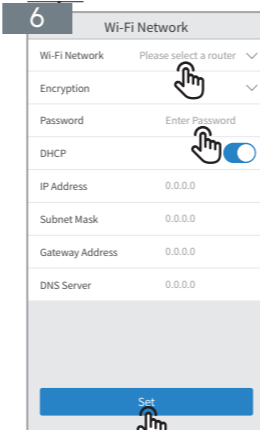
STEP #4 - Connect your smart device to „Solar WiFi*“. Return to the WiFi configuration page of the AEG monitoring portal



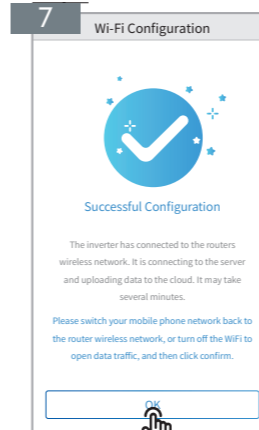
STEP #5 - Click „Next“



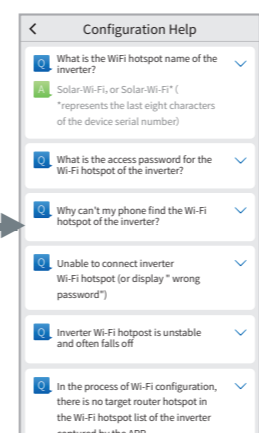
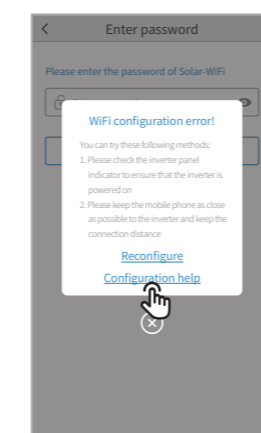
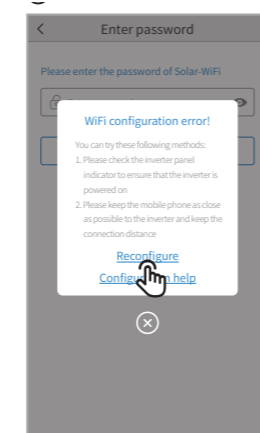
STEP #6 - Enter WiFi network name and password. Click „Set“. Switch off the DHCP first and input the IP address if you want to change the inverter IP to a specific one.



STEP #7 - Confirm and click „OK“



If the configuration was not successful, you can click on „Reconfigure“ or follow the instructions on „Configuration Help“.



Solar Solutions Products BV
Finlandlaan 1 2391PV Hazerswoude-Dorp The Netherlands |
service@aeg-industrialsolar.de | www.aeg-industrialsolar.de
AEG is a registered trademark used under license from AB Electrolux (publ).

TROUBLESHOOTING

Nr.	Problem	Troubleshooting instructions
1	Unable to find Solar-WiFi or Solar-Wi-Fi*	<ol style="list-style-type: none"> 1. Check if inverter is powered on and if the Wi-Fi module is well connected. 2. Make sure your smart device is close enough to the inverter. 3. Restart the inverter. 4. Press the „WiFi Reload“ button to reset the Wi-Fi module. 5. Repeat the WiFi configuration steps.
2	Unable to connect to Solar-WiFi or Solar-Wi-Fi*	<ol style="list-style-type: none"> 1. Try the password: 12345678; 2. Check if there is already another device connected to the Solar-Wi-Fi*. 3. Press the „Wi-Fi Reload“ button to reset the Wi-Fi module. 4. Restart the inverter and repeat the WiFi configuration steps. 5. Check if there is any invalid / not accepted character in the password.
3	Unable to login at 10.10.100.253	<ol style="list-style-type: none"> 1. Press the „Wi-Fi Reload“ button to reset the Wi-Fi module and repeat the WiFi configuration steps. 2. Switch to other browsers such as: (preferred) Google Chrome FireFox, IE, Safari.
4	Unable to find router SSID	<ol style="list-style-type: none"> 1. Move the WiFi router closer to the inverter or use a WiFi repeater; 2. Check if the channel number of the router is higher than 13. If yes, change it into a lower number at the router configuration page.
5	Wi-Fi LED indicator keeps blinking twice even if all configuration steps were already taken	<ol style="list-style-type: none"> 1. Restart the inverter. 2. Check if the SSID, encryption method, encryption type and password on the WiFi configuration page are the same as those of the WiFi router. Correct if different. 3. Check if the maximum amount of devices allowed to connect to the WiFi router was exceeded. If yes, please disconnect some devices or modify the limitation. 4. Restart the WiFi router. 5. Move the WiFi router closer to the inverter or use a WiFi repeater to enhance the WiFi signal
6	The WiFi LED indicator blinks four times continuously even if all configurations steps were already taken	<ol style="list-style-type: none"> 1. Connect the smart device to another WiFi network (not the one of the inverter) and check in the AEG Monitoring Portal if the inverter is online. 2. Restart the WiFi router and the inverter.
7	The AEG Monitoring Portal shows the inverter is offline, but the WiFi LED indicator is always on	<ol style="list-style-type: none"> 1. Please wait a few minutes for data transmission and check the AEG Monitoring Portal later

Please visit www.aeg-industrialsolar.de to download the latest version of this document. Solar Solutions reserves the right of final explanation to this document and its attachments.